

# Fire Safety Checks

## Test your door closer

Check there is a door closer fitted to your flat door and that it doesn't become loose when the door is open.

Check that the door closes by itself without you having to pull/push it and once closed, there are no gaps between the door and the frame.

**This test should be carried out while all the windows in your flat are closed. Repeat test on a regular basis.**



## Check your door & frame seals

Check that the black band/seal which is fixed to the top, bottom and sides of your **door surround** is in place and is not damaged.

Also check the seal fixed to the top and sides of the door **frame** is in place and not damaged. The seal shown is white but these can be different colours.



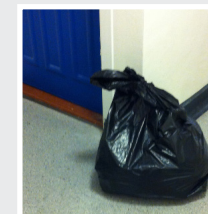
## Test your smoke alarm

Your flat is fitted with at least two smoke detectors. Please test these now and every week. You test the smoke detector by pushing the **'test'** button and it will make a screeching sound.



## Do not store items in communal areas

Do not store items, such as mobility scooters, bags of rubbish or furniture, outside your flat. They are a trip hazard and could cause a fire to start or spread.



## Check electrical appliance

Do not use any electrical appliance which has a broken or damaged cable or casing.

